

SKYLINE™ 3060

SUNLIGHT SIMULATING CEILING LIGHT



ABOUT

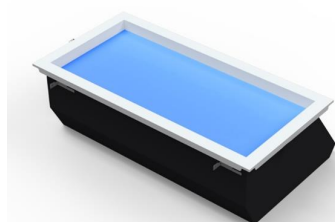
Yuji Skyline™ lighting system is based on sunlight simulator technology to artificially recreate the visual experience of natural sun light and clear sky.

With breakthroughs in mimicking sun light and sky simulation optics, Yuji Skyline™ brings a true blue sky indoor, ensuring a sufficient daily relationship with natural sun light for visual comfort and mood health.

They are excellent for scenarios that require natural sunlight experiences, preferably for residential, public, entertainment, retail, office, artistic occasions and etc.

FEATURES

- Natural blue sky visual effect
- Up to CRI 93 light quality
- Full sunlight spectrum
- Circadian cycle adjustable
- Premium thermal management
- Recessed installation
- CCT tunable & Lumen Dimmable
- Smart controlling APP available
- 30,000 hours life time



Part Number	Power Consumption	CRI	Beam Angle	Colour Temperature	Luminous Flux	On/Off	Lifetime
Skyline 3060	36W	93	40°	2700K-6500K	2500lm	100,000	30,000hr

GENERAL INFORMATION

Cap base	-	Nominal lifetime	30,000h
EU RoHS Compliant	Yes	Switching cycle	100,000X
Dimensions	600x300x185mm	Net weight per lamp	3500g

TECHNICAL DATA - PHOTOMETRIC

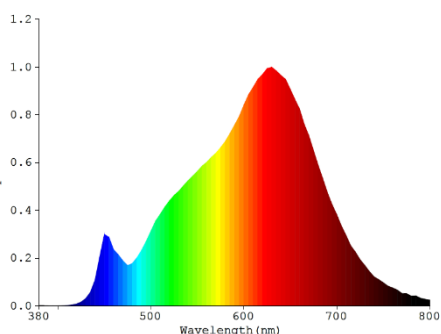
Colour temperature	2700K ~ 6500K	Colour rendering index	93
Initial luminous flux	2500lm	R9	60+
Colour consistency	SDCM < 6	TM-30-20 Rf	90
Beam angle	40°	TM-30-20 Rg	98

TECHNICAL DATA - ELECTRICAL

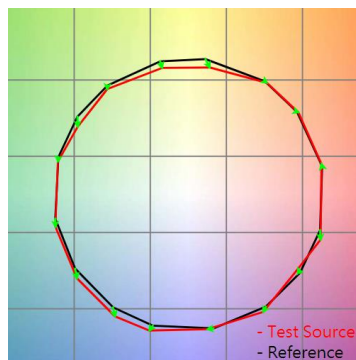
Power	36W	Nominal voltage	100~240V
Power factor	≥ 0.95	Input frequency	50/60Hz
Lamp current	160mA @230V 280mA @120V	Starting time	< 0.5s
Dimmable	Yes	Warm-up time (60%)	< 0.5s



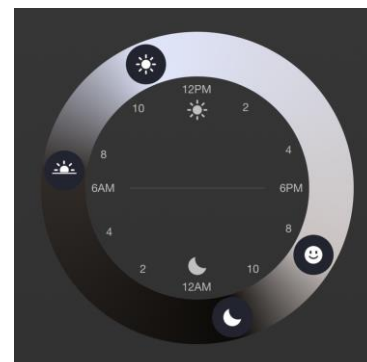
SPECTRAL POWER DISTRIBUTION (2700K)



COLOUR ACCURACY (2700K)



CIRCADIAN CYCLE SETTING



To order please contact us on +44 (0) 1229 582 430
F +44 (0) 1229 585 155 | E sales@marl.co.uk | www.leds.co.uk
in company/marl-international-limited

