

DRAWING NO	SHEET	MODEL NAME	ISSUE
<b>SPL8190</b>	<b>1 OF 2</b>	<b>SPL8190</b>	<b>1</b>

ISSUE	MODIFICATION	DRN	DATE
1	ORIGINAL ISSUE	NJK	14.08.07



**Marl International Limited**  
 Marl Business Park,  
 Ulverston, Cumbria,  
 LA12 9BN, England.

tel: +44 (0)1229 582430  
 fax: +44 (0)1229 585155  
 e-mail: sales@marl.co.uk  
 website: www.marl.co.uk

## 735 SERIES UP/DOWN LIGHT FIXTURE

### SPECIFICATIONS

#### Overview

The 735 series is a range of internal or external, high brightness, dual LED up/down light fixtures. Available in warm white, cold white and RGB with a choice of three operating powers. The fixtures are designed to be mounted on a vertical surface and emit light in two directions either vertically or horizontally. Due to the reduced power consumption and long operating life (50,000 hours), this range of fixtures are ideal for illuminating buildings and pathways. The 735 series fixtures require a constant current input. Please refer to Marl Creative Arc Solid State Lighting Product Selector catalogue for wiring options.

#### Mechanical

Dimensions: See sheet 2  
 Housing: Grey painted cast aluminium  
 Bezel: Grey painted cast aluminium  
 Lens: 12mm toughened glass  
 IP rating: IP65  
 Cable: 2 x 2m un-terminated flying lead

#### Electrical

Input voltage: 24Vdc or 110-240Vac (see driver data)  
 Input current (white): 700, 1000 or 1400mA  
 Input current (RGB): 700mA  
 Operating power (white): 17W, 24W or 34W  
 Operating power (RGB): 24W max  
 Above operating powers apply to each LED. The 735 series fixtures contain two LEDs therefore the operating power will be double.

#### Optical

LED colour: See LED data sheet (for LED part number see sheet 2)  
 LED CRI: See LED data sheet (for LED part number see sheet 2)  
 Medium optic: 25°

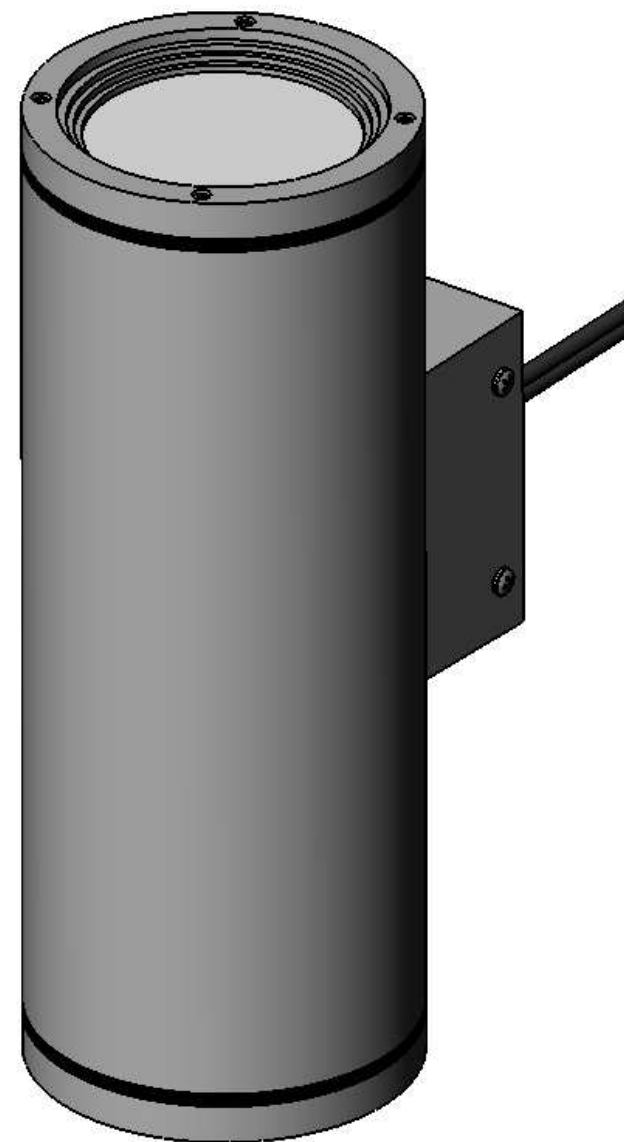
#### Thermal

Max. Ambient temperature: 40°C

#### Driver Options

A - Low voltage (24Vdc), 1 way, non-dimmable (white only): See SPL8148  
 B - Low voltage (24Vdc), 2-4 way, non-dimmable (white only): See SPL8148  
 D - Mains voltage, 1 way, non dimmable (white only): See data sheet LP1040  
 E - 24Vdc, 1 way (RGB): See SPL8097  
 F - DMX controller (white or RGB): See SPL8099

Wiring schematics: See SPL8192



### Benefits

- RGB colour mixing at source
- Industry leading efficacy from light engine
- Low power consumption
- Low maintenance
- Sealed to IP65
- UK manufacturing to ISO 9001

### Applications

- Architectural lighting
- Dual illumination of buildings and pathways
- Feature lighting

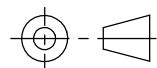


TOLERANCE/ SCALE UOS

LINEAR ± NA

ANGULAR ± NA

ORIGINAL SCALE 1:3



ALL DIMENSIONS

IN MM

DRN: NJK

DATE: 14.08.07

CHK1:

CHK2:

DRAWING NO SHEET MODEL NAME ISSUE  
**SPL8190 2 OF 2 SPL8190 1**

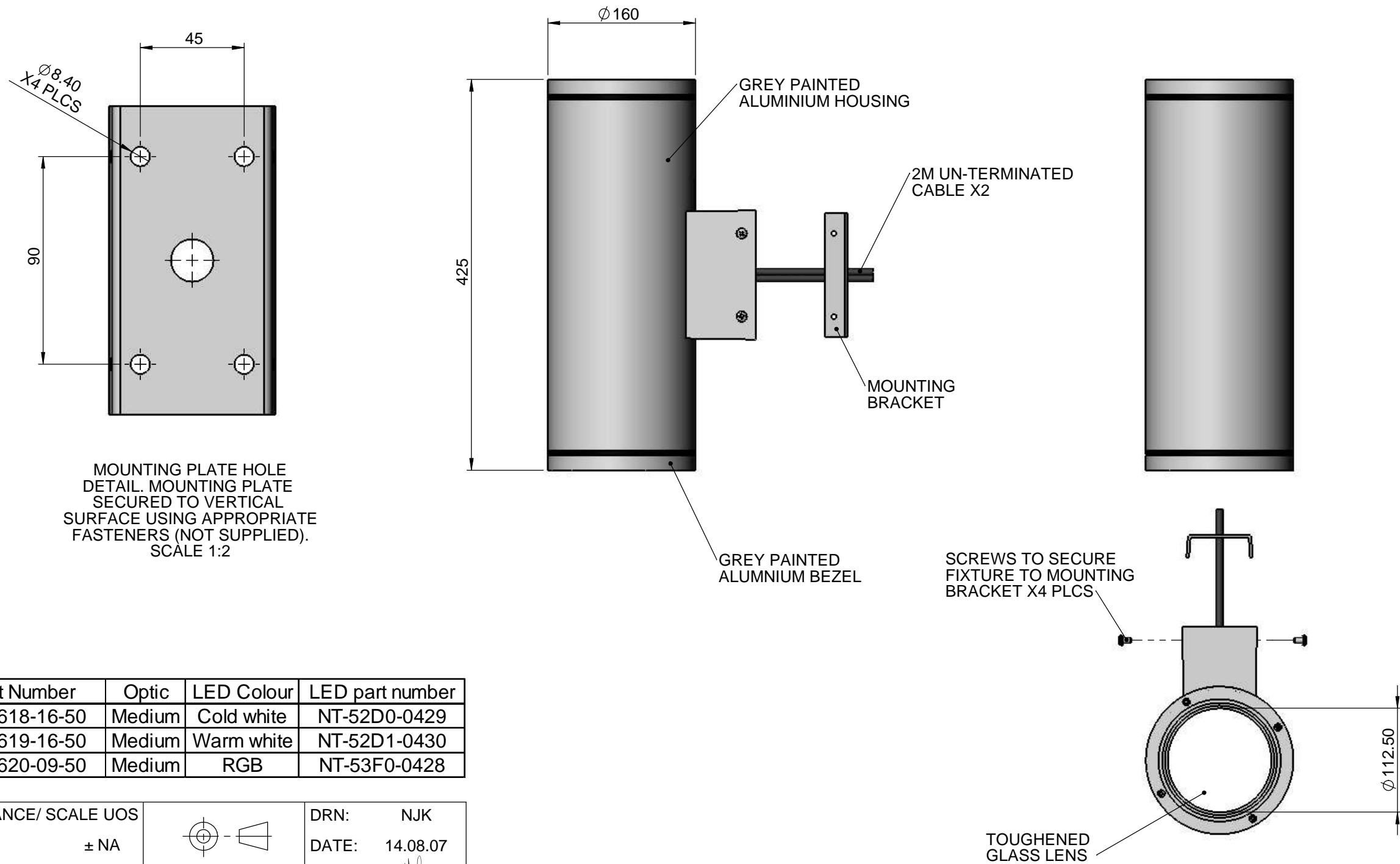
ISSUE	MODIFICATION	DRN	DATE
1	ORIGINAL ISSUE	NJK	14.08.07



**Marl International Limited**  
 Marl Business Park,  
 Ulverston, Cumbria,  
 LA12 9BN, England.

tel: +44 (0)1229 582430  
 fax: +44 (0)1229 585155  
 e-mail: sales@marl.co.uk  
 website: www.marl.co.uk

## 735 SERIES UP/DOWN LIGHT FIXTURE



### Benefits

- RGB colour mixing at source
- Industry leading efficacy from light engine
- Low power consumption
- Low maintenance
- Sealed to IP65
- UK manufacturing to ISO 9001

### Applications

- Architectural lighting
- Dual illumination of buildings and pathways
- Feature lighting



Part Number	Optic	LED Colour	LED part number
735-618-16-50	Medium	Cold white	NT-52D0-0429
735-619-16-50	Medium	Warm white	NT-52D1-0430
735-620-09-50	Medium	RGB	NT-53F0-0428

TOLERANCE/ SCALE UOS	DRN:	DATE:
LINEAR $\pm NA$	NJK	14.08.07
ANGULAR $\pm NA$	CHK1: <i>[Signature]</i>	
ORIGINAL SCALE 1:5	CHK2: <i>[Signature]</i>	