

DRAWING NO	SHEET	MODEL NAME	ISSUE
SPL8356	1 OF 2	SPL8356	1

ISSUE	MODIFICATION	DRN	DATE
1	ORIGINAL ISSUE	NJK	04.02.08



Marl International Limited
 Marl Business Park,
 Ulverston, Cumbria,
 LA12 9BN, England.

tel: +44 (0)1229 582430
 fax: +44 (0)1229 585155
 e-mail: sales@marl.co.uk
 website: www.marl.co.uk

STEP LIGHT: 743-615-00-50

SPECIFICATIONS

Overview

The 743-615-00-50 is a high intensity Step Light designed for the rail industry. Due to the reduced power consumption and long operating life (50,000 hours), the Step Light is ideal as a fit and forget, maintenance-free replacement for halogen type fittings. The Step Light is fitted with a two way receptacle which mates with the two pin plug of the constant current driver (supplied). Extension cables, to increase distance between Step Light and driver, are available on request. Please contact Marl Sales Department for more information. The driver also has a two pin receptacle fitted to the 10-40Vdc input wires.

Mechanical

Dimensions: See page 2
 Housing: Black anodised aluminium
 Bezel: Decorative chrome plated aluminium
 Nut: Black anodised aluminium
 Lens: Toughened glass

Electrical

Input Voltage: 10-40Vdc
 Operating power: 3W
 Operating Current: 350mA
 Connectors: Deutsch DTM series

Optical

Light engine: Atlas NT-42D0-0426
 Medium optic: 30°
 For additional information please contact Marl Sale Department and request LED data sheet for NT-42D0-0426

Thermal

Maximum ambient temperature: 40°C

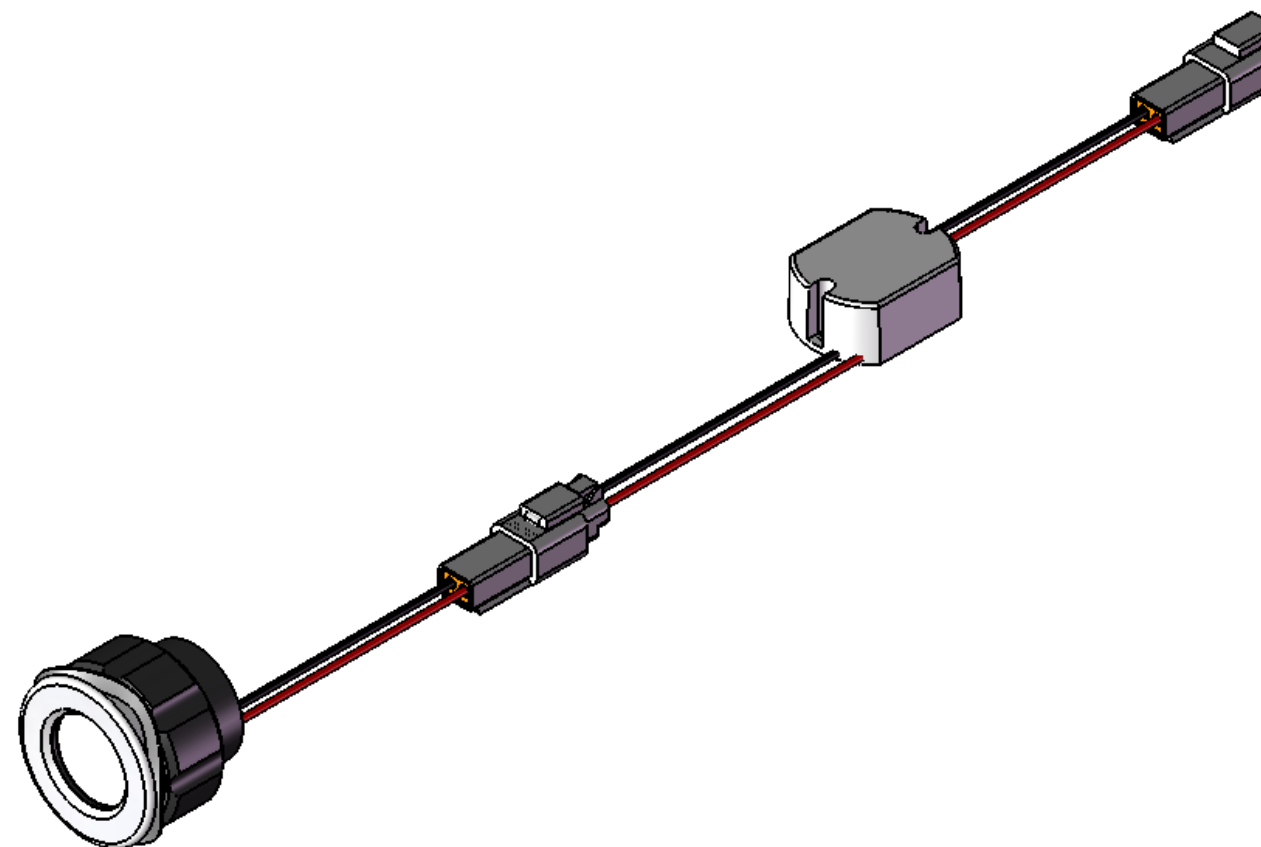
Additional Information

The Step Light is supplied with a constant current driver which requires a 10-40Vdc input (to be purchased separately). Marl stock the following rail specified, low voltage PSU.

For RIA12 Specified PSU order: **PWRSUP24-110VDCRIA12**
 To power upto 50 Step Lights

EN50155 Specified PSU are available on request.
 Please contact Marl Sales Department for more information.

The Step Light meets RVAR Guidelines 1998: 6(1)(d)



Benefits

- Industry leading efficacy from light engine.
- Low power consumption
- Low maintenance
- UK manufacturing to ISO 9001:2001

Applications

- Rail
- Architectural
- Residential
- Commercial
- Retail

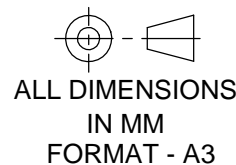


TOLERANCE/ SCALE UOS

LINEAR ± NA

ANGULAR ± NA

ORIGINAL SCALE 1:2



DRN: NJK

DATE: 04.02.08

CHK1: *[Signature]*

CHK2: *[Signature]*

DRAWING NO	SHEET	MODEL NAME	ISSUE
SPL8356	2 OF 2	SPL8356	1

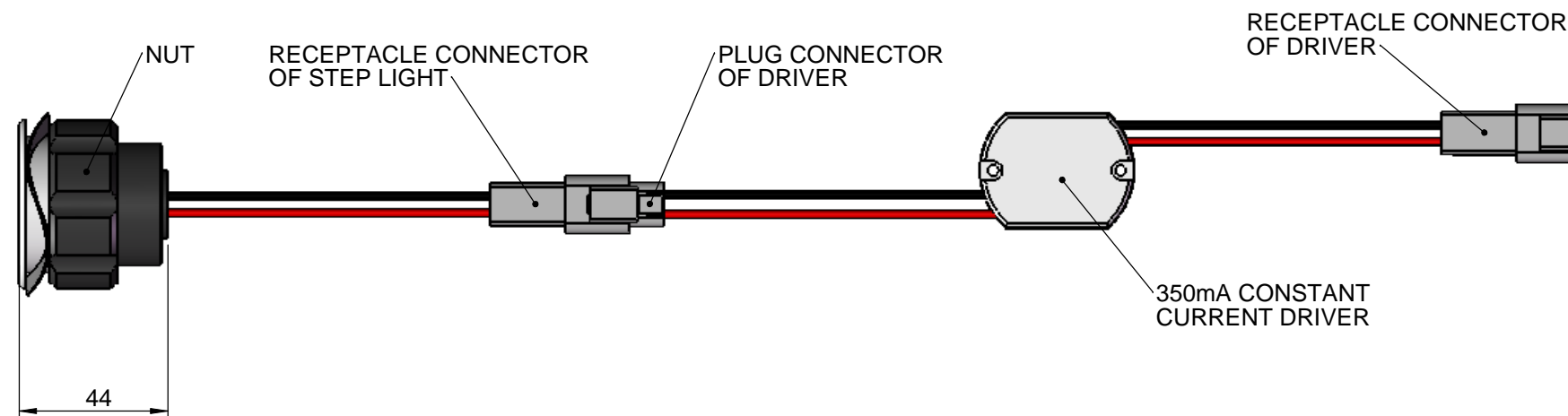
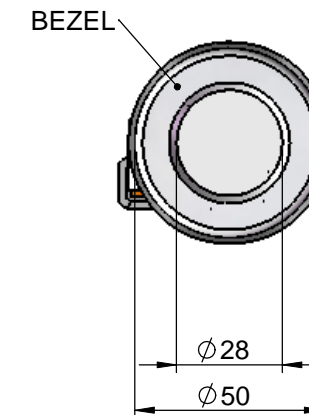
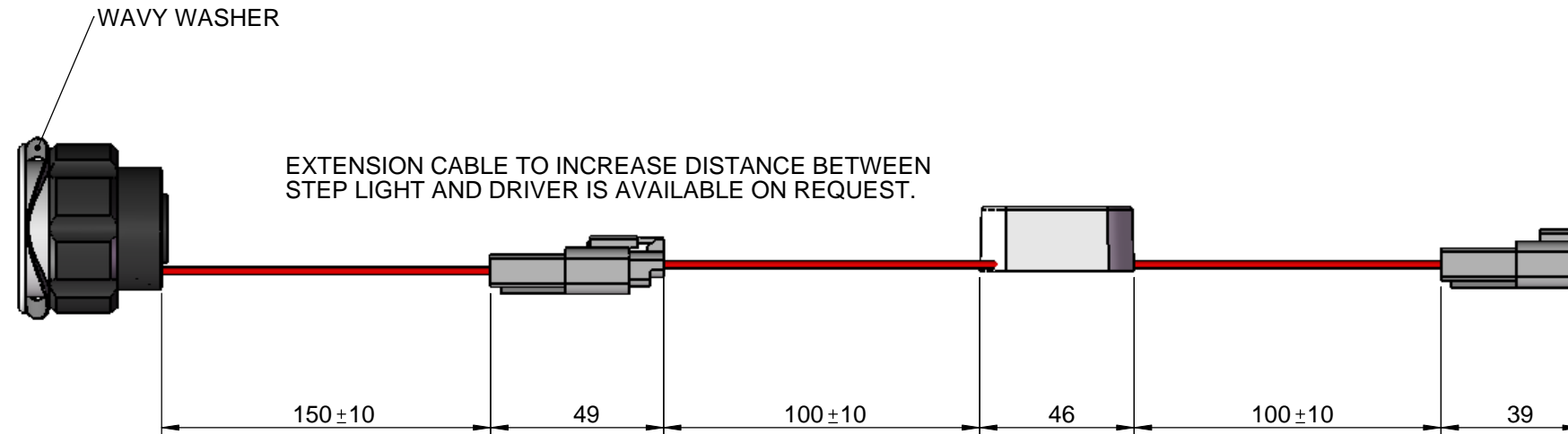
ISSUE	MODIFICATION	DRN	DATE
1	ORIGINAL ISSUE	NJK	04.02.08



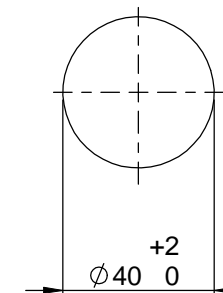
Marl International Limited
 Marl Business Park,
 Ulverston, Cumbria,
 LA12 9BN, England.

tel: +44 (0)1229 582430
 fax: +44 (0)1229 585155
 e-mail: sales@marl.co.uk
 website: www.marl.co.uk

STEP LIGHT: 743-615-00-50



HOLE CUTOUT
DETAIL 1:2



Part Number	Optic	LED Colour	LED reference number
743-615-00-50	Medium	Daylight White	NT-42D0-0426

Benefits

- Industry leading efficacy from light engine.
- Low power consumption
- Low maintenance
- UK manufacturing to ISO 9001:2001

Applications

- Rail
- Architectural
- Residential
- Commercial
- Retail



TOLERANCE/ SCALE UOS		DRN:	NJK
LINEAR	± NA	DATE:	04.02.08
ANGULAR	± NA	CHK1:	<i>[Signature]</i>
ORIGINAL SCALE	1:2	CHK2:	<i>[Signature]</i>

ALL DIMENSIONS
IN MM
FORMAT A3