

|                |               |                |          |
|----------------|---------------|----------------|----------|
| DRAWING NO     | SHEET         | MODEL NAME     | ISSUE    |
| <b>SPL8359</b> | <b>1 OF 2</b> | <b>SPL8359</b> | <b>1</b> |

|       |                |     |          |
|-------|----------------|-----|----------|
| ISSUE | MODIFICATION   | DRN | DATE     |
| 1     | ORIGINAL ISSUE | TC  | 14/02/08 |



**Marl International Limited**  
 Marl Business Park,  
 Ulverston, Cumbria,  
 LA12 9BN, England.

tel: +44 (0)1229 582430  
 fax: +44 (0)1229 585155  
 e-mail: sales@marl.co.uk  
 website: www.marl.co.uk

## 738-622-00-50 LED Downlight

### SPECIFICATIONS

#### Overview

The 738 Series is a high efficacy vandal resistant LED downlight capable of up to 100 lm/W with a MTBF in excess of 75,000hrs and Ingress Protection of IP67 to EN60529 provided proper cable termination is used. The housing is a robust powdercoated aluminium with integral mounting holes, Fraen optic and 5mm thick toughened glass lens to BS6206 for extreme environments. A side exiting miniature IP68 rated nickel-plated brass cable gland is incorporated. This has a 1m flying lead high-performance cable.

The 738 series is manufactured in a quality assured environment to EN ISO 9001 (2000).

#### Mechanical

Housing: Powdercoated Aluminium to BS4800:00A05 Goose Grey  
 Lens: 5mm Toughened Glass to BS6206  
 Gland: LappGroup IP67 Nickel-plated Brass  
 Cable: 1m 2-Core Radox Tenuis 2x0.75mm<sup>2</sup> to IEC 60228 class 5

#### Electrical

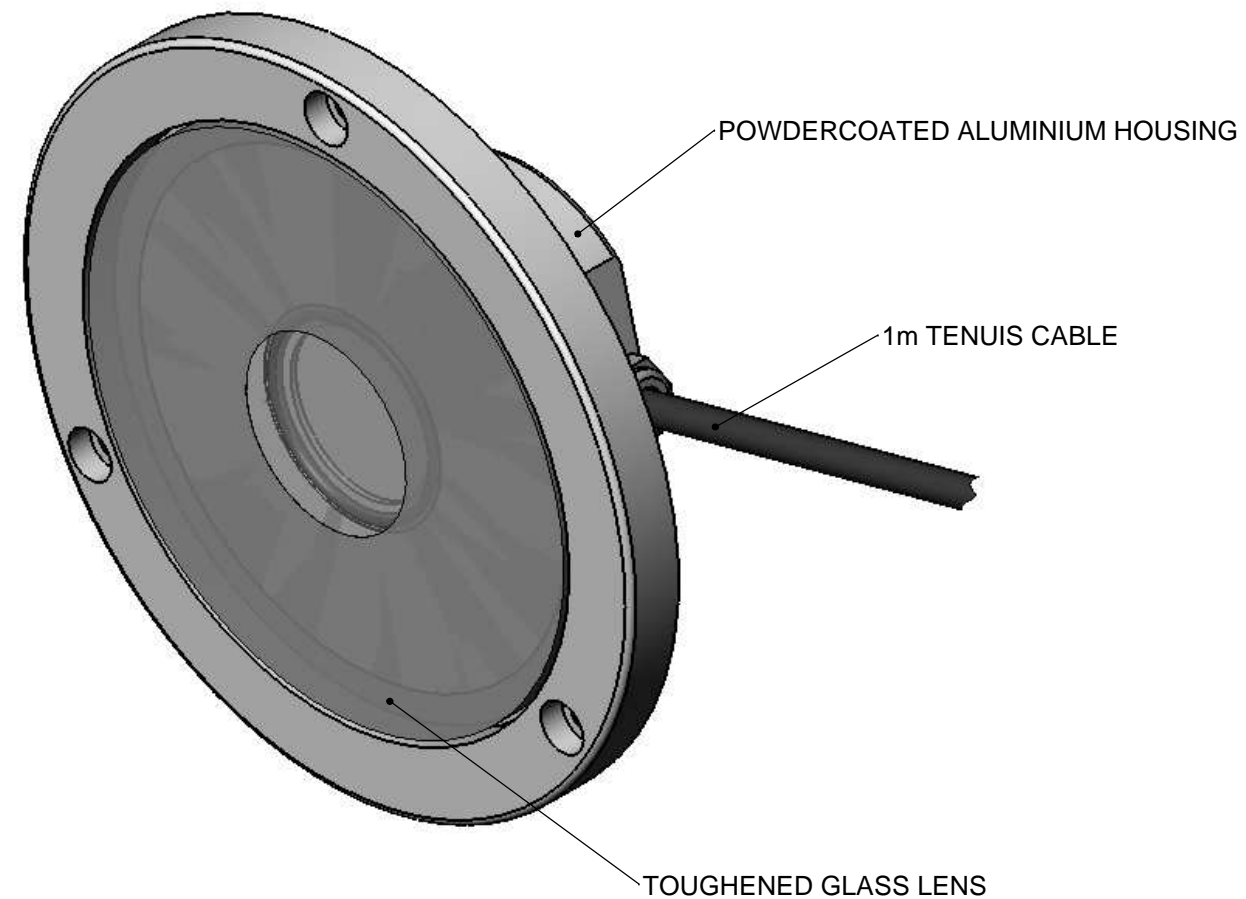
Input Voltage: 3.2Vdc  
 Input Power: 1 - 1.3W  
 Input Current: 0.31 to 0.39A (constant current)

#### Optical

Optic: 30° SRLFraen

#### Thermal

Operating Temperature: -20 °C to +50 °C



### Benefits

- Ultra Long Life >75,000hrs
- Maintenance Free
- Exceptional Reliability
- Water & Vandal Proof
- Ultra Low Power
- SELV Low Voltage DC
- High Efficacy >90lm/W
- IP67 Rating

### Applications

- Solar Powered Lighting
- Vestibule Lighting
- Extreme Environment Lighting
- Bus Shelter Lighting
- Rolling Stock Lighting



|                      |       |       |          |
|----------------------|-------|-------|----------|
| TOLERANCE/ SCALE UOS |       | DRN:  | TC       |
| LINEAR               | ± 0.1 | DATE: | 14/02/08 |
| ANGULAR              | ± 1°  | CHK1: |          |
| ORIGINAL SCALE       | 1:1   | CHK2: |          |

|                |               |                |          |
|----------------|---------------|----------------|----------|
| DRAWING NO     | SHEET         | MODEL NAME     | ISSUE    |
| <b>SPL8359</b> | <b>2 OF 2</b> | <b>SPL8359</b> | <b>1</b> |

|       |                |     |          |
|-------|----------------|-----|----------|
| ISSUE | MODIFICATION   | DRN | DATE     |
| 1     | ORIGINAL ISSUE | TC  | 14/02/08 |

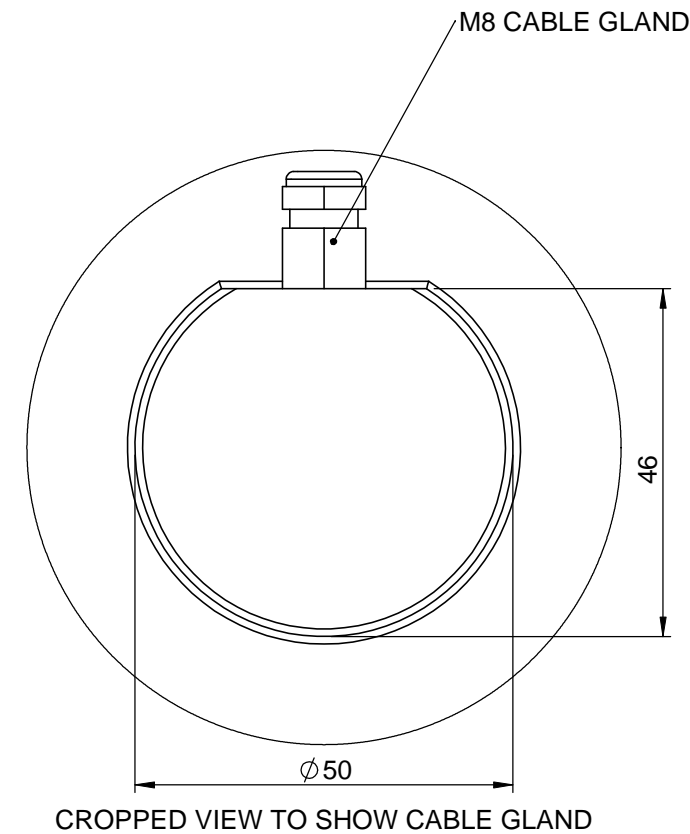
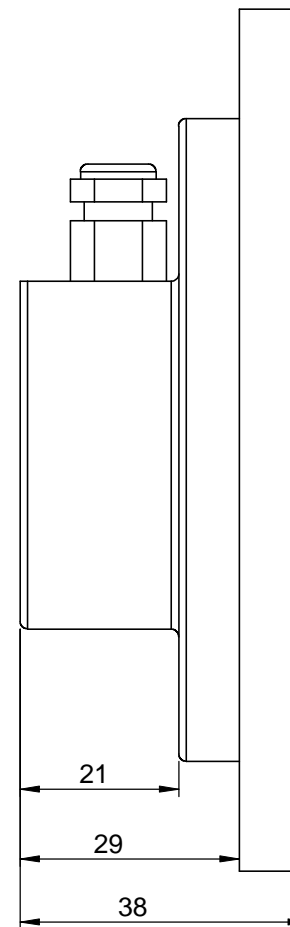
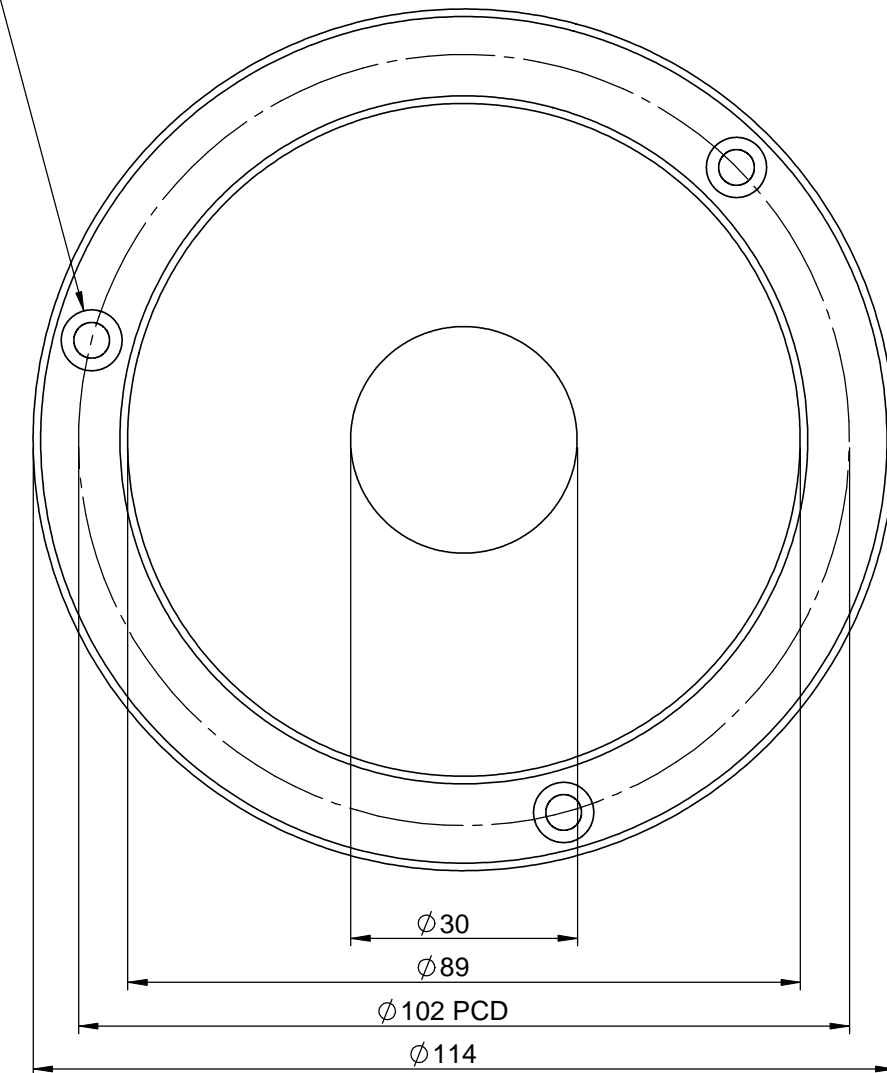


**Marl International Limited**  
 Marl Business Park,  
 Ulverston, Cumbria,  
 LA12 9BN, England.

tel: +44 (0)1229 582430  
 fax: +44 (0)1229 585155  
 e-mail: sales@marl.co.uk  
 website: www.marl.co.uk

## 738-622-00-50 LED Downlight

3x  $\varnothing 4.70$  THRU  
 $\varnothing 8 \nabla 4$



### Benefits

- Ultra Long Life >75,000hrs
- Maintenance Free
- Exceptional Reliability
- Water & Vandal Proof
- Ultra Low Power
- SELV Low Voltage DC
- High Efficacy >90lm/W
- IP67 Rating

### Applications

- Solar Powered Lighting
- Vestibule Lighting
- Extreme Environment Lighting
- Bus Shelter Lighting
- Rolling Stock Lighting

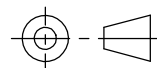


TOLERANCE/ SCALE UOS

LINEAR  $\pm 0.1$

ANGULAR  $\pm 1^\circ$

ORIGINAL SCALE 1:1



ALL DIMENSIONS

IN MM

DRN: TC

DATE: 14/02/08

CHK1: *[Signature]*

CHK2: *[Signature]*