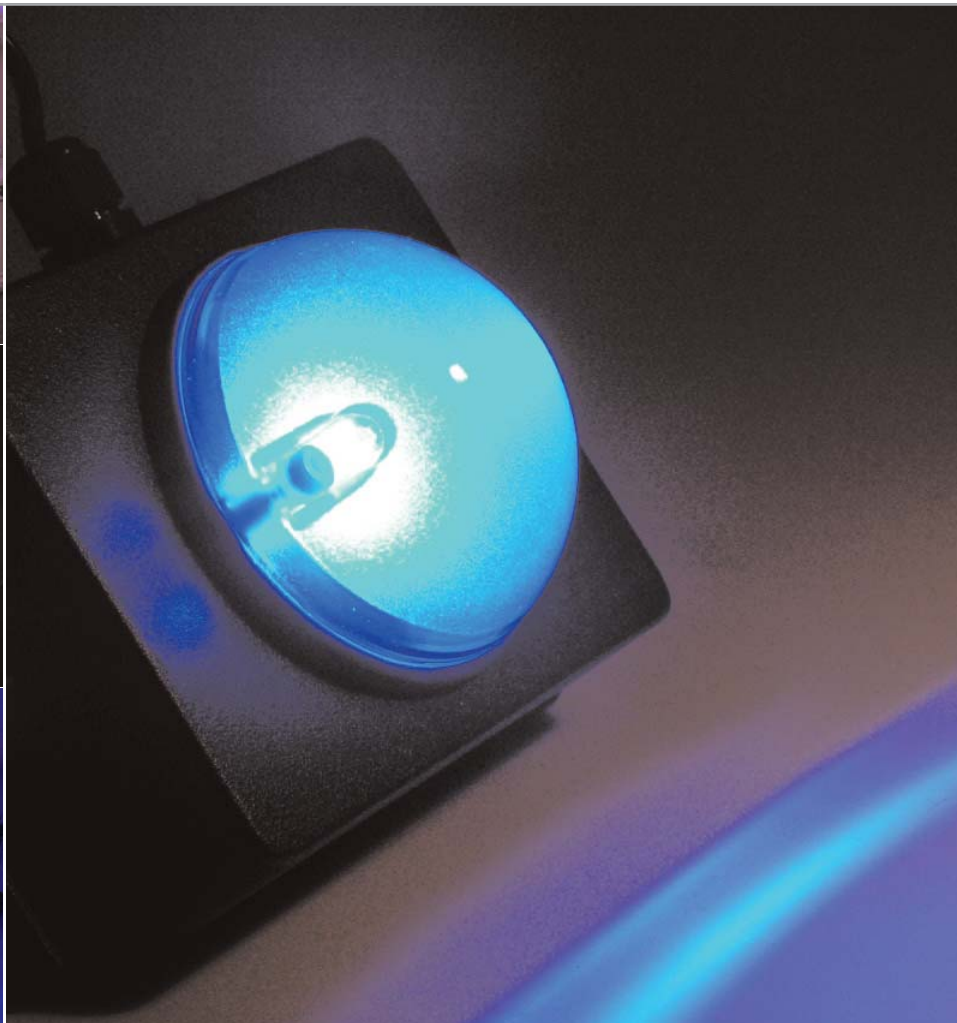


Aztec Cube

Bulkhead unit incorporating a high intensity LED light engine.

The Aztec range of LED lighting products combines the worlds brightest LED light engines from Lamina Ceramics with over 30 years of Mar's UK based design and manufacturing expertise. This results in a high quality, durable and robust range of lighting products.

The Aztec Cube is a robust bulkhead unit for wall and ceiling applications, incorporating a high intensity LED light engine, and is precision engineered to provide a reliable, efficient and easily maintained light source.

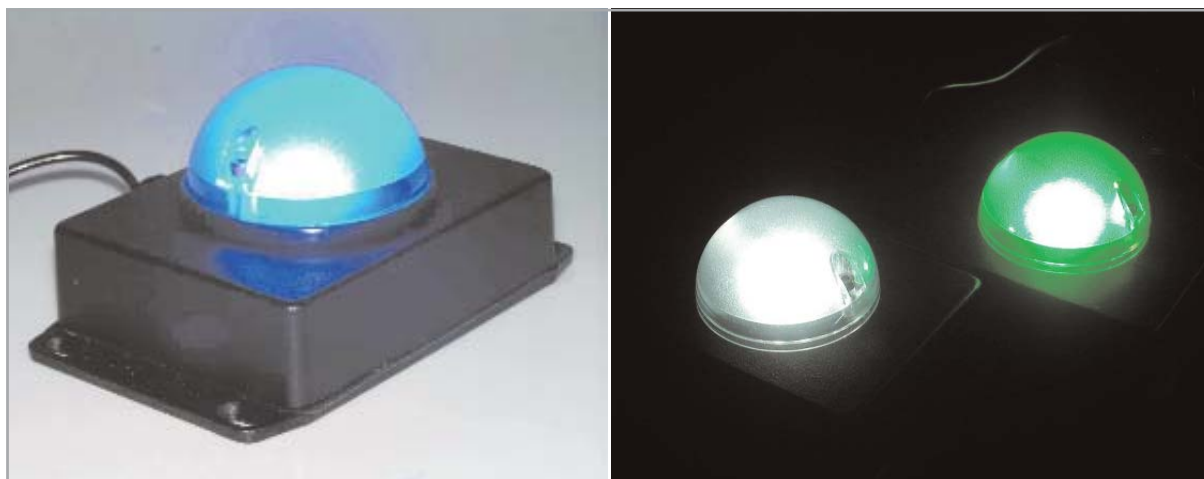


Aztec Cube

Part Number Sequencing

PART NUMBER	COLOUR	OPERATING VOLTAGE	OPERATING CURRENT	NOMINAL DOMINANT WAVELENGTH OR COLOUR TEMP.	TYPICAL LUMINOUS FLUX (1m)
Single Colour Units					
712-601-83	Red 	110-230Vac	56/28mA	618nm	120
712-602-83	Yellow 	110-230Vac	56/28mA	589nm	129
712-603-83	Green 	110-230Vac	52/27mA	525nm	78
712-604-83	Blue 	110-230Vac	54/27mA	470nm	28
712-605-83	Cool White 	110-230Vac	57/28mA	5500k	105*
712-601-22	Red 	24Vdc	200mA	618nm	120
712-602-22	Yellow 	24Vdc	200mA	589nm	129
712-603-22	Green 	24Vdc	161mA	525nm	78
712-604-22	Blue 	24Vdc	170mA	470nm	28
712-605-22	Cool White 	24Vdc	180mA	5500k	105*
UNITS		Vac/Vdc	mA	-	lm

* = Intensities (lm) and colour shades of white (x,y co-ordinates) may vary between LEDs within a batch



Aztec Cube

Technical Specifications

Ta = 25 °C

Input Voltage: 110-230Vac / 24Vdc

EMC: The unit complies with the requirements of the EMC directive (89/336/EEC) including all applicable amendments.

Electrical Safety: The unit complies with the requirements of the Low Voltage Directive (72/23/EEC) including all applicable amendments.

Operating Temperature: -10°C to +40°C

Storage Temperature: -10°C to +50°C

IP Rating: IP44

MATERIALS

Body: Black Textured Powder Coated Aluminium

Lens: UV stable Polycarbonate

Overall Size: 150mm x 95mm x 75mm max.

Cable Length: 2m nominal, not terminated.

Cable Colours: **24Vdc** = Positive - Red, Negative - Black
110-230Vac = Live - Brown, Neutral - Blue

Illuminant Type: High Intensity LED Light Engine

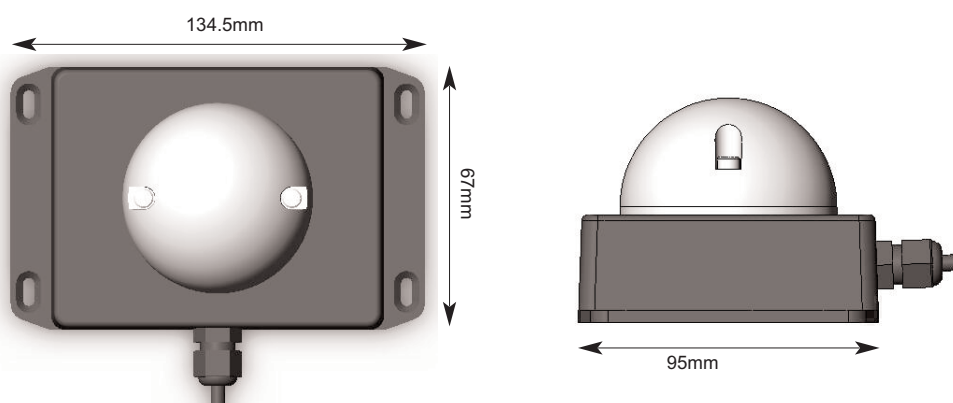
Tungsten Equivalent: Comparable with 40 Watt light bulb when measured on axis.

Features & Benefits

- 50,000 hour life
- Low power consumption
- Weather proof
- Impact resistant
- Five colour options
- Fit and Forget
- Easy Installation
- Universal input on mains voltage

Applications

- Emergency lighting
- Landscape and Architectural
- Retail display lighting
- Leisure
- Health and Safety
- General lighting
- Transport
- Task lighting



How to Order:

website: www.marl.co.uk • email: sales@marl.co.uk • webstore: www.leds.co.uk

Marl International Limited • Marl Business Park • Ulverston • Cumbria LA12 9BN • United Kingdom

Tel: +44 (0)1229 582430 • Fax: +44 (0)1229 585155

The information contained in this datasheet does not constitute part of any order or contract and should not be regarded as a representation relating to either products or service. Marl International reserve the right to alter without notice the specification or any conditions of supply for products or service.



BS EN ISO 9001:2000
Approved Manufacturer