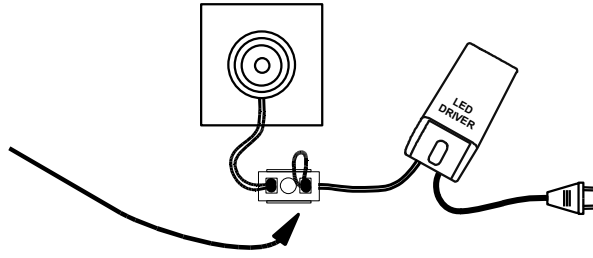


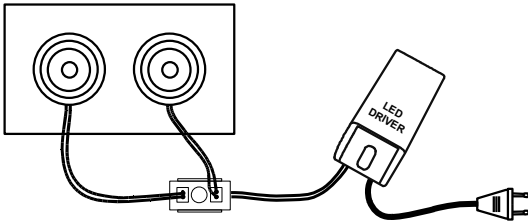
Always disconnect the mains of the driver before plugging or unplugging the LEDs.
 Failure to do so will damage or destroy the LEDs because of the high voltage present on the driver output when there is no load connected.

L053000S1

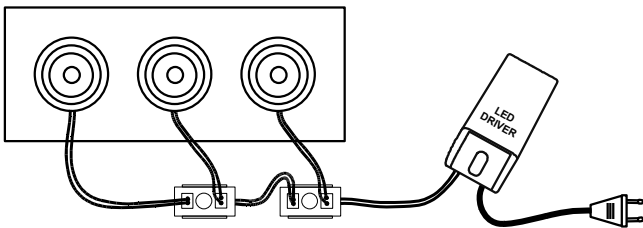
Short Circuit Plug:
 The LEDs are always connected in series, so you will need to close the circuit with an extra plug when you connect only one LED.



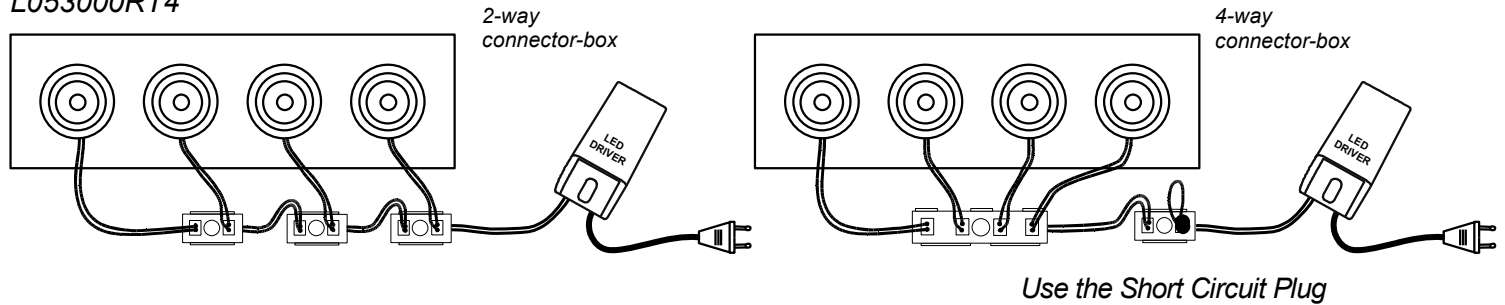
L053000RT2



L053000RT3



L053000RT4



L053000RT5

