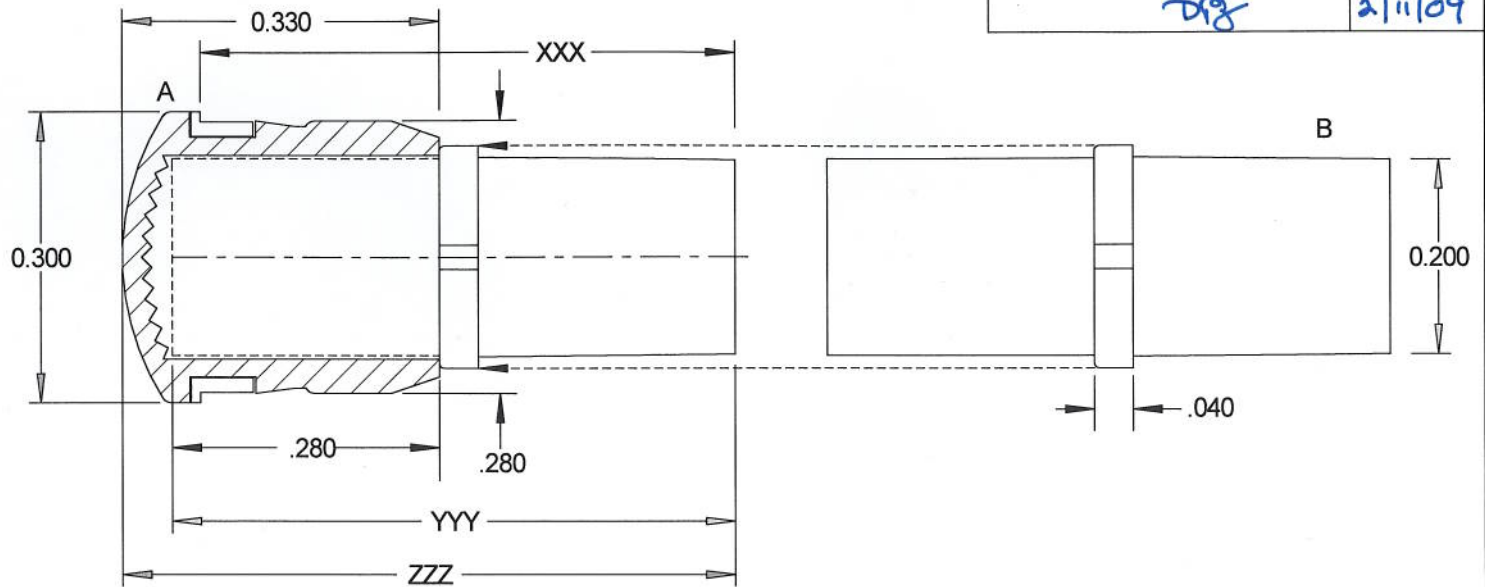


APPROVAL	DATE
<i>DJ</i>	2/11/09



ORDER CODE	LENGTH
XXX = 033	.330"
053	.530"
073	.730"
093	.93"
113	1.13"
133	1.33"
178	1.78"

YYY = LCV LENGTH
036 = .360"
056 = .560"
076 = .760"
096 = .960"
116 = 1.160"
136 = 1.360"
181 = 1.81"

ZZZ = OVERALL LENGTH
= .410"
= .610"
= .810"
= 1.01"
= 1.21"
= 1.41"
= 1.86"

#### BILL OF MATERIALS

ITEM	P/N	DESCRIPTION	COLOR	LENGTH / (QTY)
A	CMS 322 XTP	5mm MOISTURE SEALED LENS	XTP**	(1)
B	LCV YYY* CTP	5mm LITEPIPE	CLEAR	YYY* / (1)

\*See Litepipe Length Table (YYY)

\*\*See Lens Color Table (XTP)

STANDARD LENS COLORS	Color
XTP = RTP	RED
GTP	GREEN
ATP	AMBER
YTP	YELLOW
CTP	CLEAR
BTP	BLUE

REVISIONS			
NO	DESCRIPTION	DATE	BY
1	ADD LMS 178 (LCV 181)	9/29/08	JG
2	MATCH ZZZ TO XXX	2/10/09	AZ
3			
4			
5			
6			

## VCC P/N: LMS XXX XTP



**VISUAL COMMUNICATIONS COMPANY, INC.**

190 Bosstick Blvd, Ste. 101 San Marcos, California 92069 U.S.A.

Phone (760) 560-1300 Fax (760) 560-1301 e-mail [vcsales@vcclite.com](mailto:vcsales@vcclite.com)

TOLERANCES	SCALE	N/A	DATE	01/28/08	DRAWING NO.	REV.
DECIMAL .xxx, ±.004;	DIAMETER	.003 Max	DRAWN BY	AZ	LMS XXX XTP	2
.xx, ±.015	RADI	.008 Max	CHK'D			
ANGLE ±.03'						